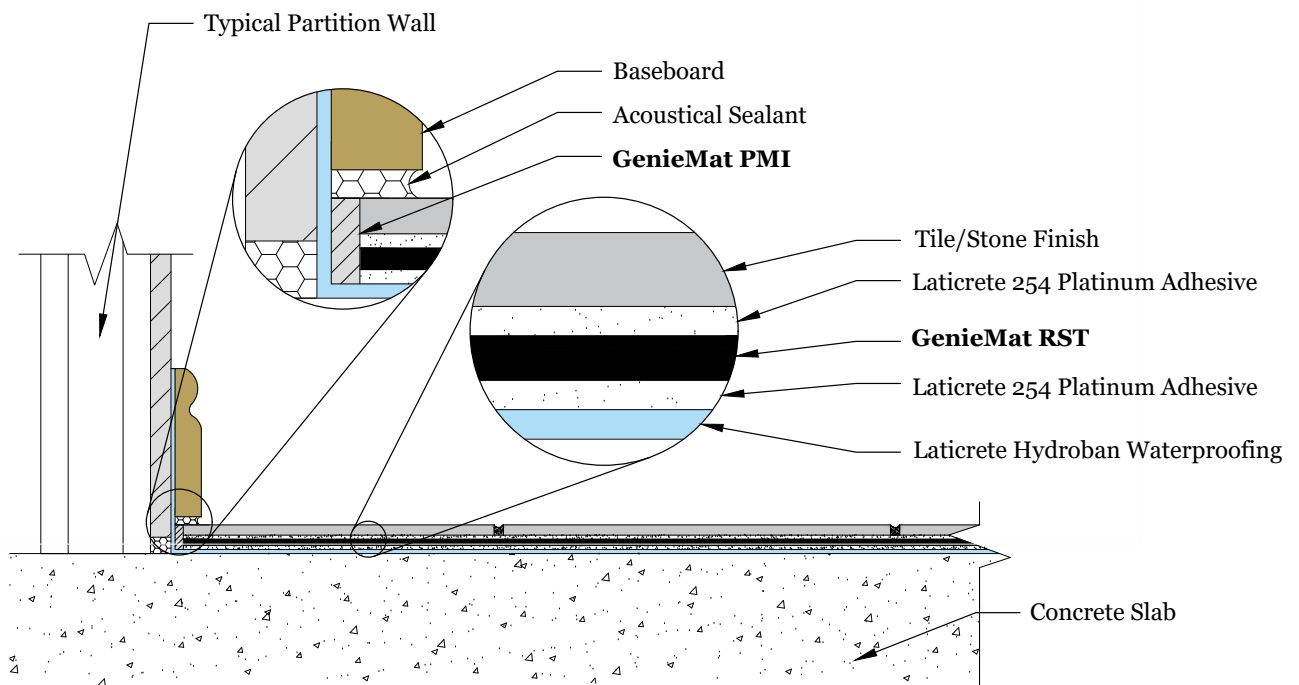


WATERPROOFING & SOUND ISOLATION IN WET AREAS USING GENIEMAT RST

Pliteq approves the following system in any wet areas and offers a 25 year system warranty. For complete details on warranty coverage, please refer to Page 2.



Why Choose Pliteq's **GenieMat RST** System:

- High performing sound control solution installed directly below tile/stone
- Proven reliability with millions of square meters of successful installations worldwide
- Independently tested and certified by leading laboratories
- Industry-leading 25-year system warranty

CONTACT US

For Your Project Specific Questions
T. +61 3 9018 7696 | **E.** info@pliteq.com

© PLITEQ AUSTRALIA & NEW ZEALAND 2024.

09/24 [®] Trademarks of Pliteq Inc. The information provided is accurate to the best of our knowledge at the time of issue. However, we reserve the right to make changes when necessary without further notification. Suggested application may need to be modified to conform with local building codes and conditions. We cannot accept responsibility for products that are not used, or installed, to our specifications. All listed dimensions are nominal.





25 Year System Warranty with Pliteq GenieMat RST (International)

**Globally Proven
Construction Solutions**

DS-025.0INTL-0215

APPLICATION	PRODUCTS
Underlayment	NXT™ Primer NXT Level Plus
Floor Warming [^]	Floor Heat Mat (Mat Only) Floor Heat Wire (Wire Only)
Vapor Reduction	NXT Vapor Reduction Coating
Waterproofing/ Anti-Fracture	HYDRO BAN® HYDRO BAN Sheet Membrane 9235 Waterproofing Membrane LATAPOXY® Waterproof Flashing Mortar
Shower System	HYDRO BAN Pre-Sloped Shower Pan (and applicable accessories) HYDRO BAN Linear Drain HYDRO BAN Bonding Flange Drain
Sound Control/ Anti-Fracture	125 Sound & Crack Adhesive Pliteq GenieMat RST
Plaza & Deck	Plaza and Deck System
Thick Bed Method	3701 Fortified Mortar 3701 Mortar Admix mixed with 226 Thick Bed Mortar
Slurry Bond Coat	254 Platinum 4237 Latex Additive mixed with any of the following: <ul style="list-style-type: none"> ▪ 211 Powder; or ▪ 317 Mortar
Thin Bed Method	254 Platinum (regular or rapid version) 255 MULTIMAX™ United States Invention Patent No.: 6,784,229 B2 LATAPOXY 300 Adhesive Glass Tile Adhesive Mortar 4237 Latex Additive mixed with any of the following: <ul style="list-style-type: none"> ▪ 211 Powder; or ▪ 317 Mortar 325 Premium Tile Adhesive mixed with 333 Flexible Additive
Spot Bonding	LATAPOXY 310 Stone Adhesive - Standard and Rapid Grade
MVIS	MVIS Air & Water Barrier MVIS Premium Mortar Bed MVIS Veneer Mortar MVIS Premium Pointing Mortar MVIS Silicone Sealant
Grouting	SPECTRALOCK® PRO Premium Grout (non-industrial applications) United States Invention Patent No.: 6,881,768 (and other Patents) SPECTRALOCK 2000 IG LATAPOXY SP-100 PERMACOLOR® Grout United States Invention Patent No.: 6,881,768 (and other Patents) PERMACOLOR Select United States Invention Patent No.: 6,881,768 (and other Patents)
Sealant [†]	LATASIL™ LATASIL 9118 Primer

[†] Use of suitable flexible sealant is required per Tile Council of North America Detail EJ171 for use in expansion joints, coves, corners, changes in plane and other joints or wherever tile or stone abuts dissimilar materials or restraining surfaces.

[^] Floor Warming Thermostat sold by LATICRETE International, Inc. warrants parts and materials for one (1) year from the date of purchase. The sole remedy for the Floor Warming Thermostat is product replacement (see DS 230.13 for full details on the LATICRETE® Product Warranty).

LIMITED WARRANTY

Subject to the conditions and limitations stated below, LATICRETE INTERNATIONAL, INC. ("LATICRETE") warrants that the products listed on this document will be free from manufacturing defects and will not break down or deteriorate under normal usage for a period of twenty-five (25) years from the date of purchase when installed in accordance with the written specifications of LATICRETE and industry standard guidelines. For this limited warranty to apply, the applications that comprise the installation must be performed with the products listed in this document for each application (refer to chart).

Notwithstanding the previous paragraphs, exterior facades with ceramic tile, stone, adhered masonry veneer, or thin brick installed over substrates with steel or wood framing do not qualify for this limited warranty—see Data Sheet 230.15 for such applications.

DISCLAIMER

THIS LIMITED WARRANTY IS GIVEN IN LIEU OF ANY OTHER WARRANTY, EXPRESS OR IMPLIED. THERE ARE NO WARRANTIES, EXPRESS OR IMPLIED, INCLUDING WARRANTIES BASED ON SAMPLES OR ORAL STATEMENTS, WHICH EXTEND BEYOND THE DESCRIPTION ON THE FACE OF THIS DOCUMENT. IMPLIED WARRANTIES OF MERCHANTABILITY AND OF FITNESS FOR A PARTICULAR PURPOSE ARE EXCLUDED.

EXCLUSIVE REMEDY

The sole and exclusive remedy for a breach of this limited warranty is replacement of only the specific portion of the installation that is proven to be defective**. LATICRETE will pay for replacement of its own products and replacement of finishing materials, as well as for labor for the replacement installation, but LATICRETE will not pay more, calculated on a square-foot (square-meter) basis, for the replacement than the original purchase price of the portion being replaced.

LATICRETE will not pay for replacement of any portion of the installation that is not proven to be defective.

In the event that the sole and exclusive remedy described above fails of its essential purpose, the liability of LATICRETE is limited to the monetary value, on a square-foot (square-meter) basis, of the original purchase price of the portion being replaced.

**NOTE: Efflorescence is a normal condition of portland cement mortars and is not a defective condition.

EXCLUSIONS

LATICRETE is not responsible for workmanship not in accordance with the instructions of LATICRETE and industry standard guidelines. Cracking due to structural movement, excessive deflection or other failure in the substrate is also not covered. LATICRETE IS NOT LIABLE FOR ANY INCIDENTAL DAMAGES OR CONSEQUENTIAL DAMAGES, INCLUDING LOSSES DUE TO DELAYS, INCURRED BY THE PURCHASER OR ANY OTHER PARTY.

NO ASSIGNMENT

This limited warranty is not transferable or assignable.

HOW TO MAKE A CLAIM

To make a claim under this limited warranty, you must notify LATICRETE in writing within thirty (30) days of the discovery of the alleged manufacturing defect. At the option of LATICRETE, you may be required, as a condition of this limited warranty, to provide proof of product purchase and use.

Address your claim to:

LATICRETE International, Inc.
1 LATICRETE Park North
Bethany, CT 06524-3423 USA
Attn.: Technical Services Department

TECHNICAL INFORMATION

Technical assistance and information is available by calling the LATICRETE

Technical Services Line:

Toll Free: 1.800.243.4788, ext. 235
Telephone: +1.203.393.0010, ext. 235
Fax: +1.203.393.1948

LATICRETE International, Inc.
One LATICRETE Park North, Bethany, CT 06524-3423 USA • 1.800.243.4788 • +1.203.393.0010 • www.laticrete.com
©2015 LATICRETE International, Inc. All trademarks shown are the intellectual properties of their respective owners.